

Limestone Classification, after Dunham (1962)

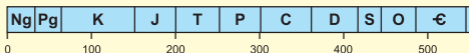
| | | | | | |
|--|----------------------|-----------------|----------------------------------|---|---------------------------------------|
| Depositional texture recognisable | | | | | Depositional texture not recognisable |
| Original components not bound together during deposition | | | | Original components were bound together | |
| Contains mud (clay and fine silt-size carbonate) | | | Lacks mud and is grain supported | | |
| Mud-supported | | Grain-supported | | | |
| Less than 10% grains | More than 10% grains | | | | |
| Mudstone | Wackestone | Packstone | Grainstone | Boundstone | Crystalline |
| | | | | | |

Porosity Classification, modified after Choquette & Pray (1970)

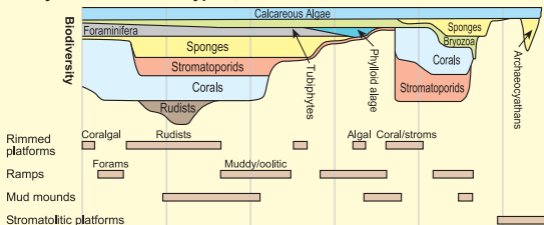
| | | | |
|--|-----------------------|-----------------------------|-----------------------------------|
| Fabric Selective Porosity Types | | | |
| | Interparticle (BP) | | Fenestral (FE) |
| | Intraparticle (WP) | | Shelter (SH) |
| | Intercrystalline (BC) | | Growth framework (GF) |
| | Mouldic (MO) | | Microporosity grains / matrix (μ) |
| Fabric Selective or Not | | Not Fabric Selective | |
| | Breccia (BR) | | Fracture (FR) |
| | Boring (BO) | | Channel (CH) |
| | Burrow (BU) | | Vug (VUG) |
| | Shrinkage (SK) | | Cavern (CV) |

Cambridge Carbonates Ltd
 No. 4, The Courtyard
 707 Warwick Road, Solihull, W. Midlands.
 B91 3DA. UK
 Tel : +44 121 705 8472
 email : info@cambridgecarbonates.co.uk
www.cambridgecarbonates.com

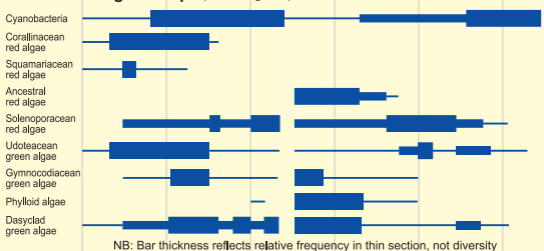




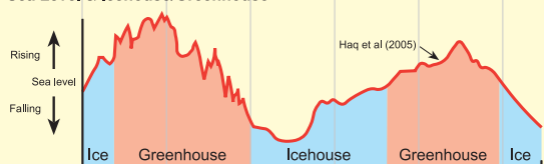
Ecosystems / Platform Types (from James 1983)



Calcareous Algal Groups (from Riding 1991)



Sea Level & Icehouse/Greenhouse



Sea Water Chemistry (from Lowenstein et al 2003)



Strontium Isotopes (from McArthur et al 2001)

