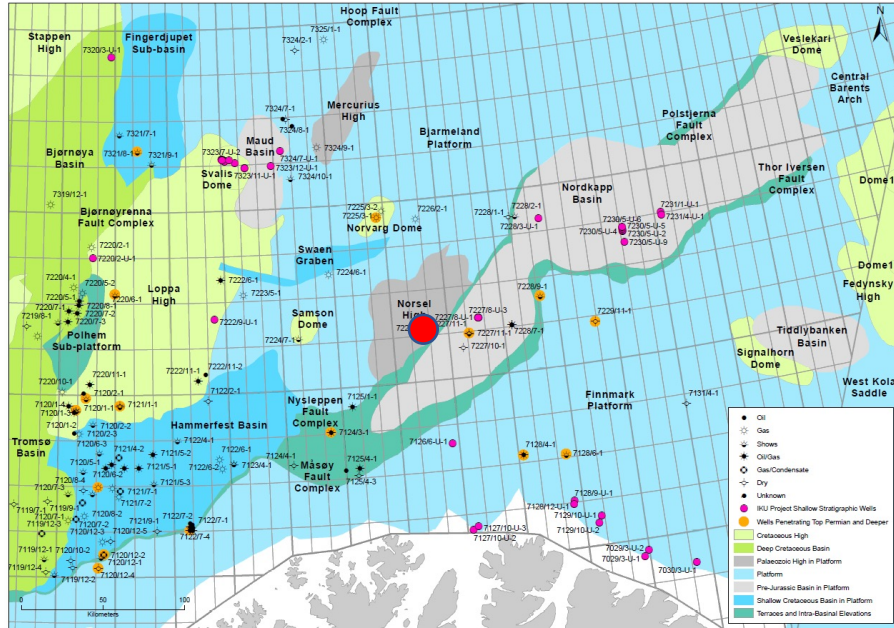
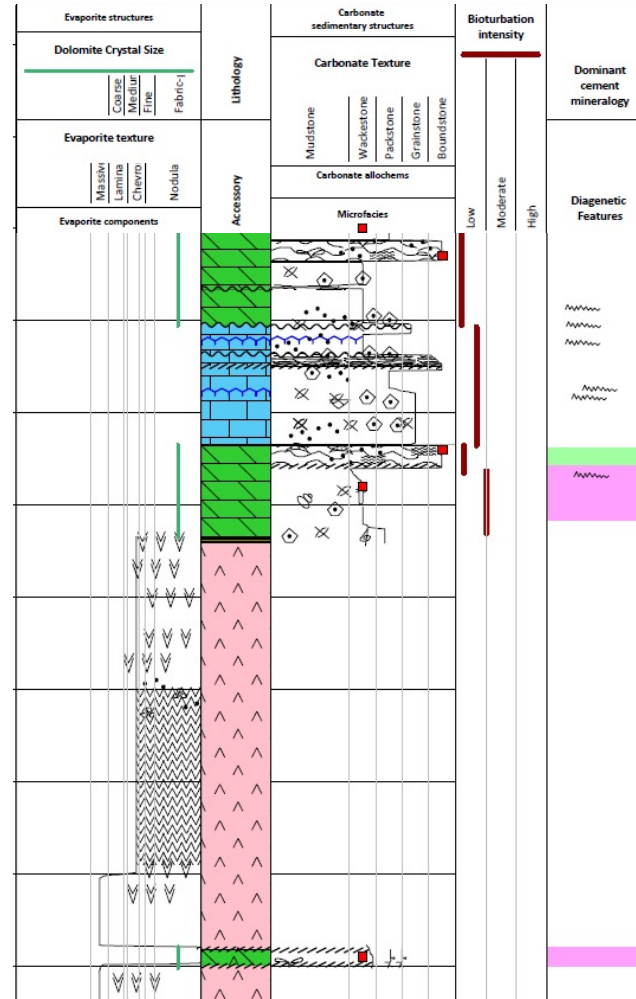


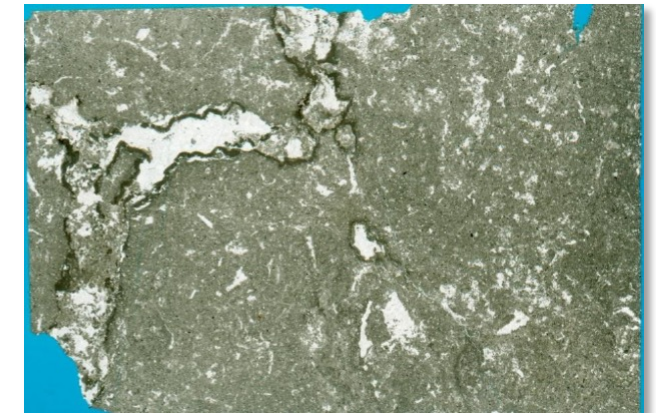
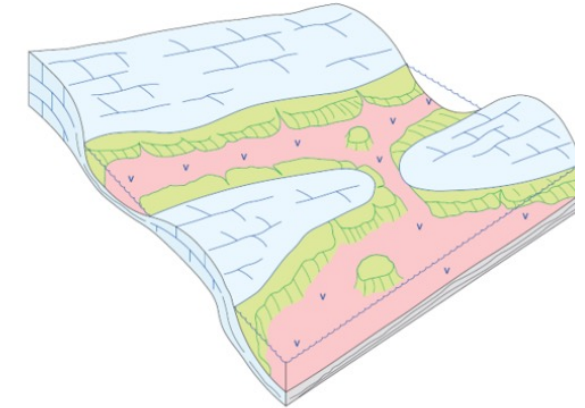
Barents Shelf Palaeozoic Sedimentology and Reservoir Quality report Series



- Key well on the Norsel High, documenting facies from the Basement, Ørn and Isbjørn Fms.
- Important cored section of evaporite facies
- Sedimentological studies, digital core logs, detailed microfacies, and diagenesis studies.
- GB £ 6,900.00



Intraself basins partly connected during high order high stands. Restricted carbonates deposited in hypersaline lagoons



Dolowackestone with rhizocretions