

Barents Shelf Palaeozoic Sedimentology and Reservoir Quality report Series

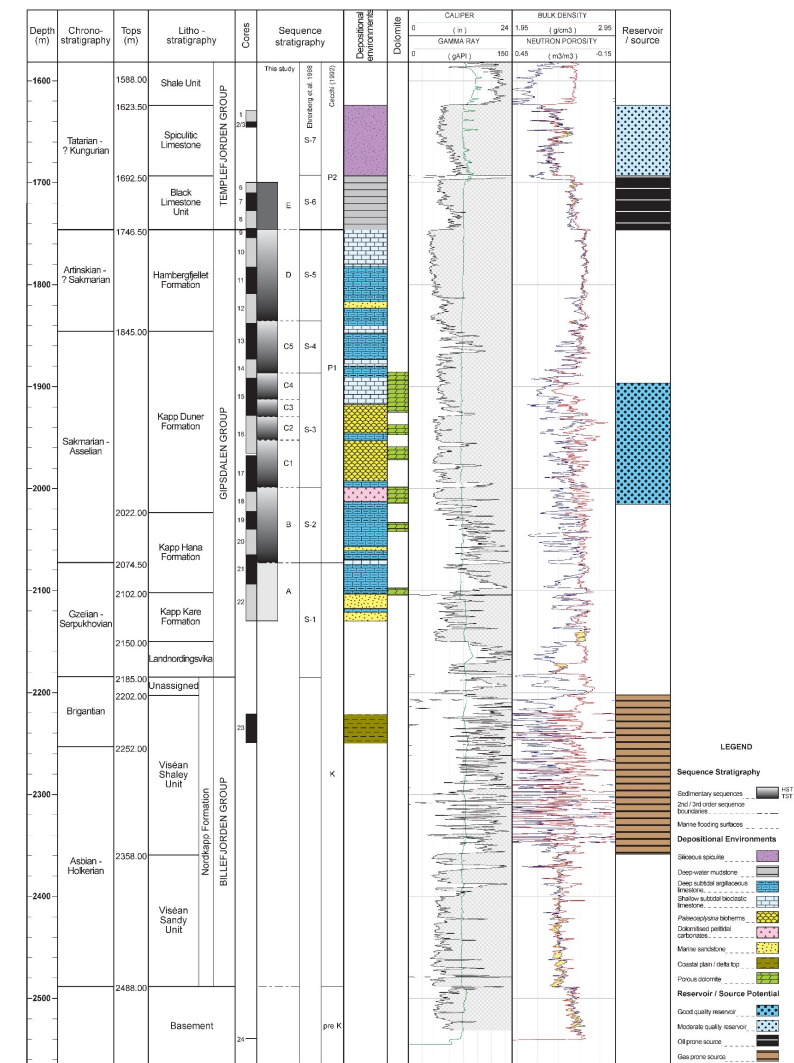
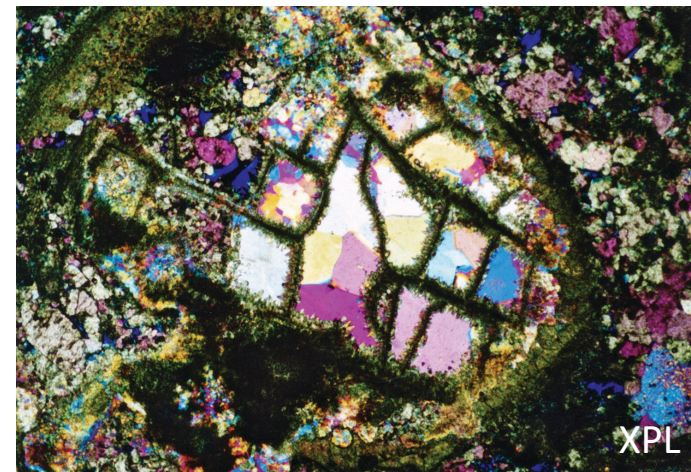
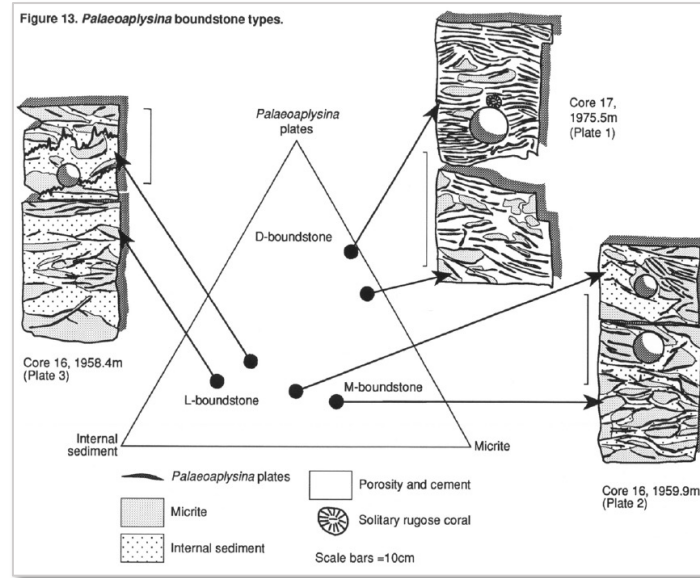
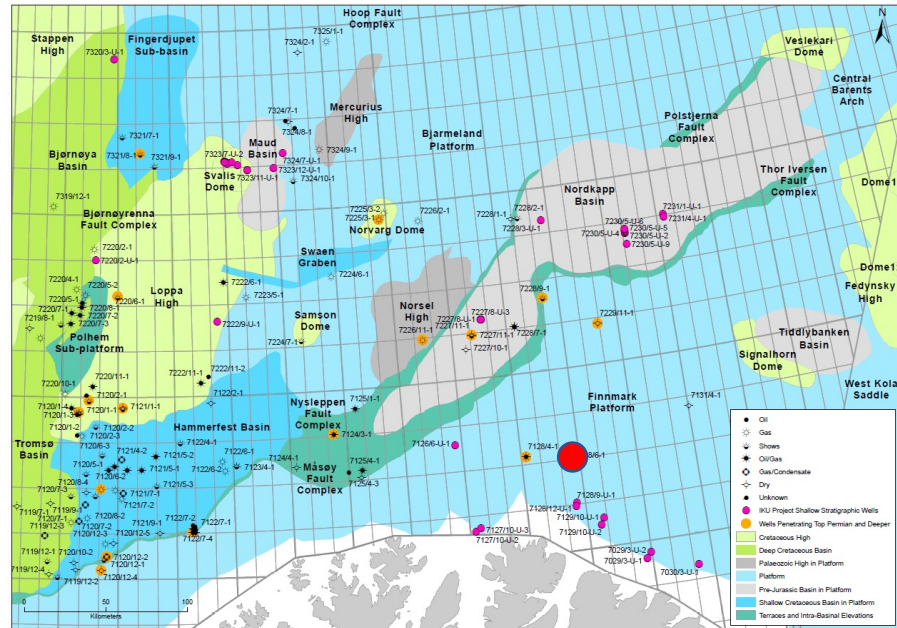


Figure 2. 7128/6-1 : Summary of sequence stratigraphy, depositional environments, lithostratigraphy and hydrocarbon potential.

- Key stratigraphic well on the Finnmark Platform (>450m core) almost continuous coverage of the basement, Billefjorden Group, Gipsdalen Group and Templefjorden Group
- Two reports:
 - Sedimentology report on cores and SWC, including digital core logs and reservoir quality studies (2 volumes): GB £11,500.00
 - Microfacies atlas (351 images): GB £6,900.00

Contact Pete Gutteridge: pete@cambridgecarbonates.co.uk