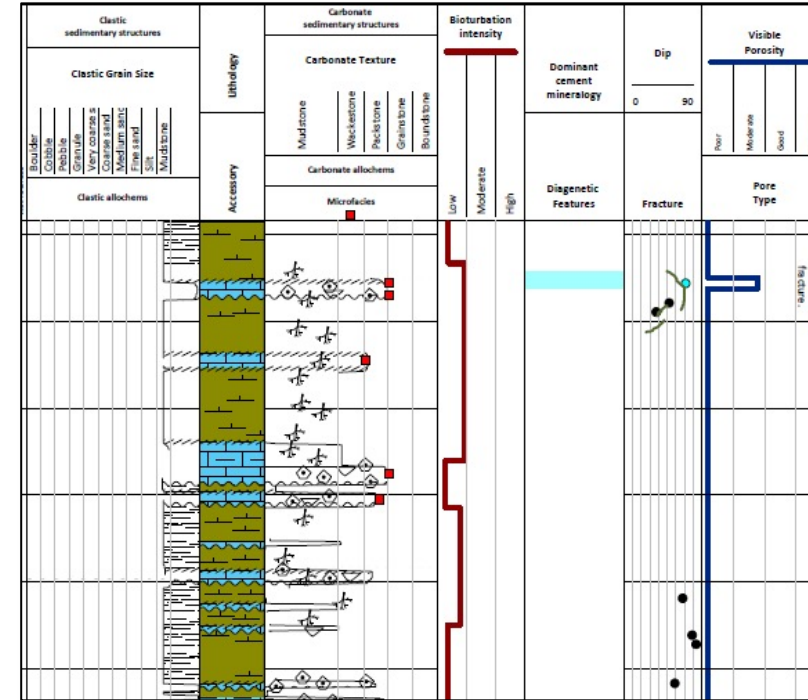
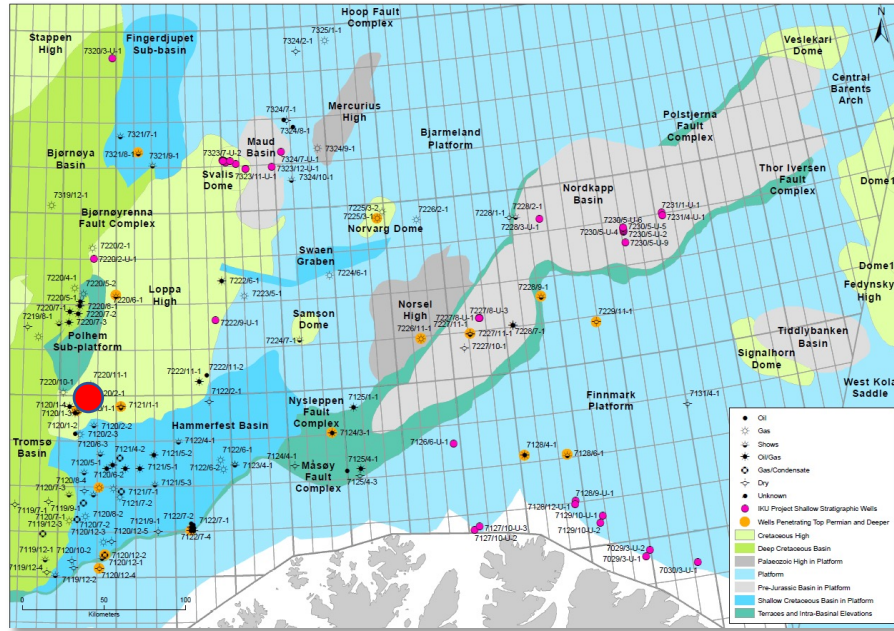


## Barents Shelf Palaeozoic Sedimentology and Reservoir Quality report Series



- Key well on southern flanks of Loppa High
- Describes and interprets the depositional environments, cyclicity, diagenesis and controls on porosity in short cores from the Ulv Formation (Bjarmeland Group) and basement
- Example of deep water carbonate turbidites
- Digital core logs and detailed microfacies images
- GB £ 2,875-00

