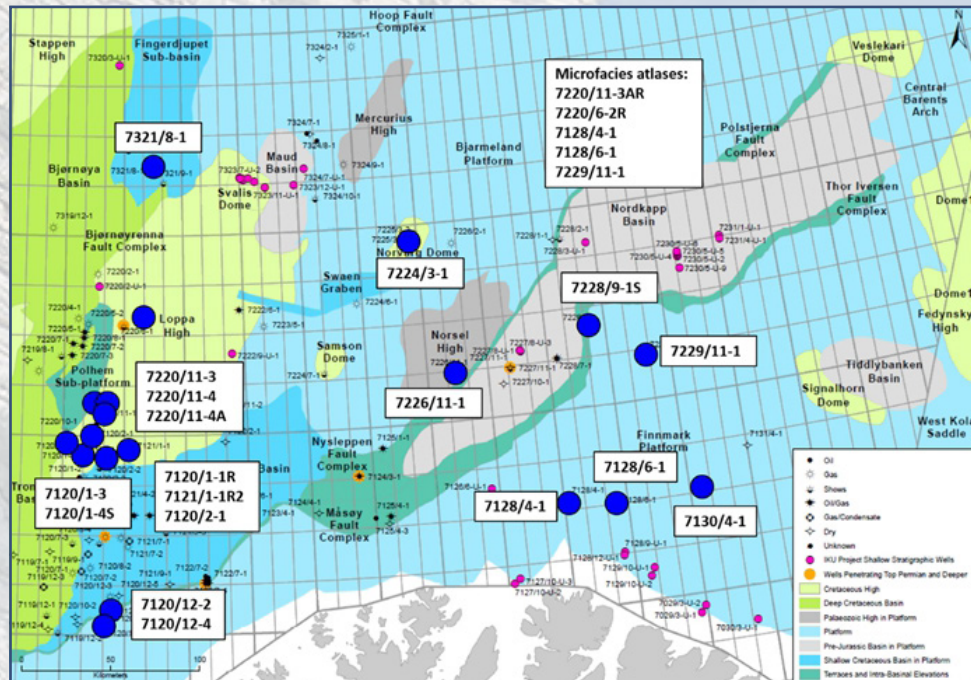


Sedimentological, sequence stratigraphic and reservoir quality studies on Palaeozoic cores from Barents Shelf wells



- This is the key data on which exploration decisions are made.
- An archive of detailed core descriptions, microfacies, depositional models and reservoir quality from 22 late Palaeozoic wells.
- Depositional models of reservoir and source rocks for all Palaeozoic sequences.
- Architecture of karst and collapse breccia systems associated with the Loppa High.
- Atlases of microfacies illustrating facies and reservoir quality.
- These cores can be demonstrated in virtual or actual workshops.

Price depends on number of wells ordered. Wells are available individually or in packages:

Wells with core from key late Palaeozoic reservoirs	7128/6-1, 7229/11-1, 7130/4-1, 7228/9-1S, 7120/12-4, 7120/1-4S, 7120/2-1, 7220/11-4
Finnmark Platform wells	7128/6-1, 7128/4-1, 7130/4-1, 7229/11-1
SW Barents wells	7120/12-2, 7120/12-4
Loppa High wells with core showing range of karst and Triassic unroofing facies	7120/2-1, 7121/1-1R, 7120/1-1R2, 7120/1-3, 7120/1-4S, 7220/11-3, 7220/11-4, 7220/11-4A
Nørdkapp Basin/Bjarmeland Platform wells	7229/11-1, 7226/11-1, 7228/9-1S, 7321/8-1, 7225/3-1
Wells with core from Late Permian spiculite	7321/8-1, 7130/4-1, 7120/1-3, 7128/4-1, 7128/6-1, 7120/1-4S, 7121/1-1R
Microfacies Atlases	7128/6-1, 7128/4-1, 7229/11-1, 7220/6-2R, 7220/11-3AR

Further information:

Peter Gutteridge

T: +44 (0)7887 781865

E: pete@cambridgecarbonates.co.uk